

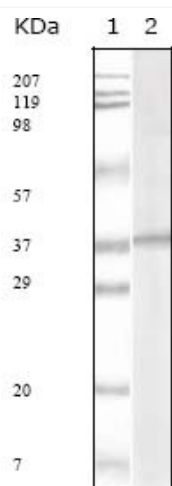


KSHV ORF62 Monoclonal Antibody

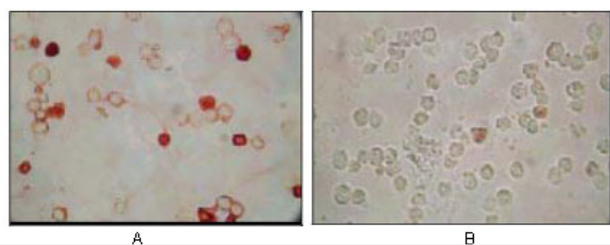
Catalog No	YP-Ab-04453
Isotype	IgG
Reactivity	KsheepV
Applications	WB;ICC;ELISA
Gene Name	
Protein Name	
Immunogen	Purified recombinant fragment of human KSHV ORF62 expressed in E. Coli.
Specificity	KSHV ORF62 Monoclonal Antibody detects KSHV ORF62 protein.
Formulation	Ascitic fluid containing 0.03% sodium azide, 0.5% BSA, 50% glycerol.
Source	Monoclonal, Mouse
Purification	Affinity purification
Dilution	Western Blot: 1/500 - 1/2000. Immunocytochemistry: 1/200 - 1/1000. ELISA: 1/10000. Not yet tested in other applications.
Concentration	1 mg/ml
Purity	≥90%
Storage Stability	-20°C/1 year
Synonyms	
Observed Band	
Cell Pathway	
Tissue Specificity	
Function	
Background	
matters needing attention	Avoid repeated freezing and thawing!
Usage suggestions	This product can be used in immunological reaction related experiments. For more information, please consult technical personnel.



Products Images



Western Blot analysis using KSHV ORF62 Monoclonal Antibody against KSHV ORF62 recombinant protein.



Immunocytochemistry analysis of TPA induced BCBL-1 cells (A) and uninduced BCBL-1 cells (B) using KSHV ORF62 Monoclonal Antibody with AEC staining.